

GoodWalk

Development that is more than just improving sidewalks

An example of walkable city development around the world.



Creating a walkable environment is an important component of many urban development plans. Many cities are taking more interest in the GoodWalk concept as a way to stimulate the economy, reduce use of fossil fuels, protect the environment, reduce traffic congestion, and promote health of the urban population.

Bangkok Today

Getting to a good-to-walk city

People face these challenges in walking in the city
Can Bangkok really become a good-to-walk city?

Bad Smell

So hot!!

It's too isolated

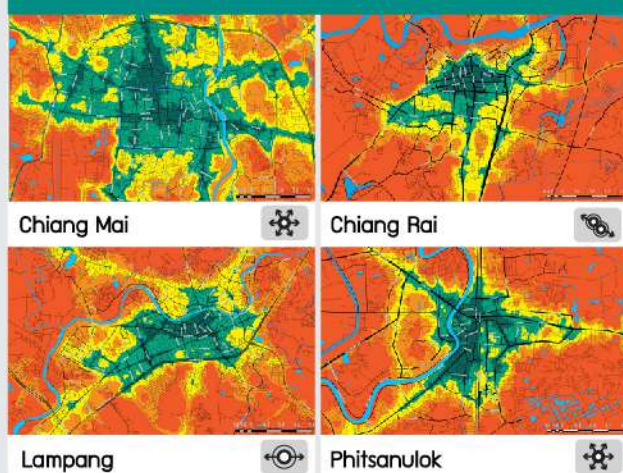
Horrible traffic



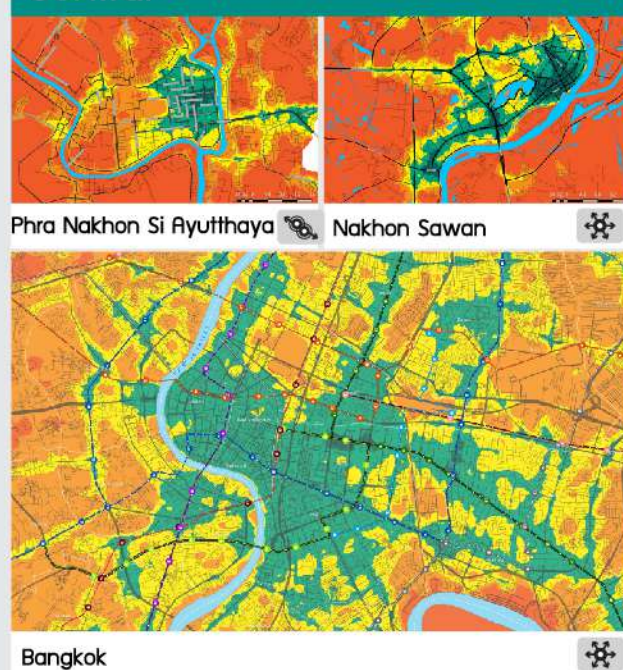
GoodWalk Accessibility Index of Major Cities in Thailand

Area are shaded in colors to denote Accessibility to public Facilities (Accessibility Index: A Score) levels. The data can be used for planning the location of public amenities to increase pedestrian access as a public health intervention and to rate value of neighborhoods and real estate investment.

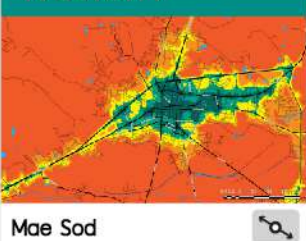
Northern



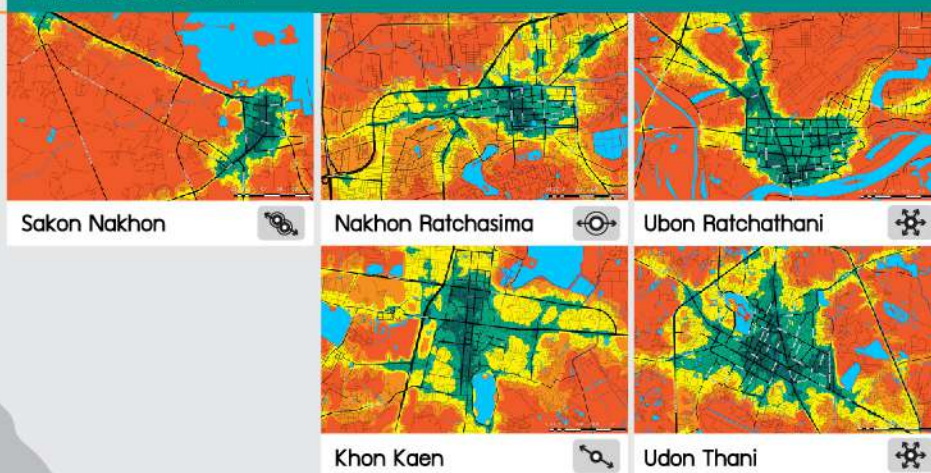
Central



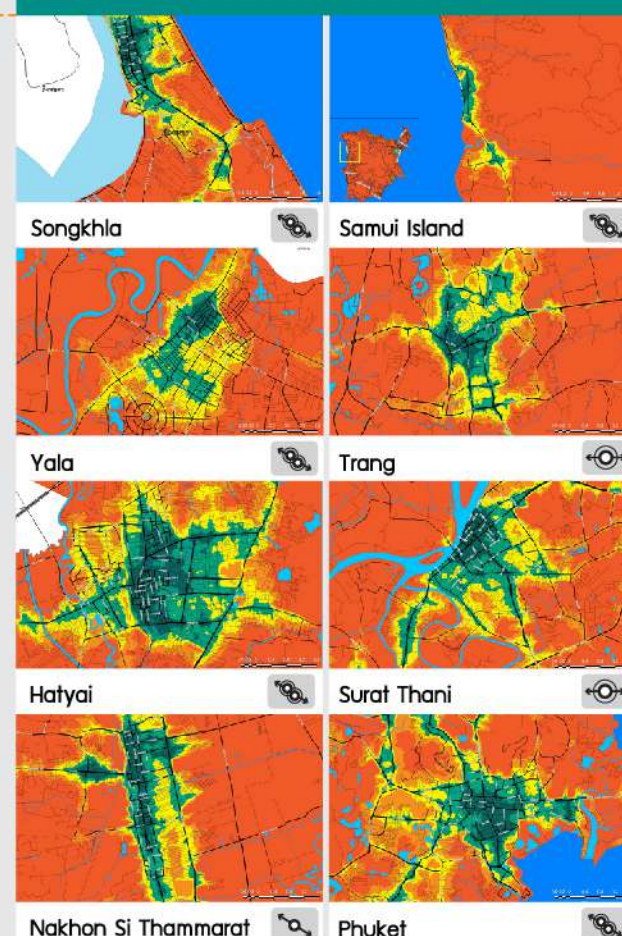
Western



Northeastern



Southern



GoodWalk city status in Thailand

1. Proportion of the area in the 24 study cities that is pedestrian-friendly is about 10 %
2. Areas with high GoodWalk city scores are mostly in the city center and have good road networks (e.g., Chang Rai, Phuket and Chiang Mai)
3. Cities with development along single stretches of main roads have lower walkability scores (e.g. Nakhon Si Tammarat, Rayong, etc.)

Characteristics of GoodWalk city

- Growth along main street
- Growth along radial road
- Growth from center
- Growth through

Accessibility to Public Aminites



www.GoodWalk.org



GoodWalkthailand
GoodWalkthailand
GoodWalkTH
02 252 2925



GoodWalk

Promote walking in daily life as a first step for making Bangkok a good-to-walk city

2 indexes of GoodWalk

Accessibility Index (A Score)

How people can access daily life public amenities by walking

Walkability Index (W Score)

How environment and features of the city are pedestrian-friendly



3 Steps to make a GoodWalk



Conduct studies to accessible select areas which are heavily used by pedestrians as a demonstration sites

Develop indicators of walkability potential tailored to the Thai context and diverse neighborhoods as a standard for measuring

Present guidelines for design and regeneration of pilot sites in tandem with coordination with development partners to turn plans into action

3 components of Walkability



Safety

This includes illumination, eyes on the street, and Traffic Interfaces. Safety is a key feature of walkability and must be the first priority.



Convenience

This includes Dimension of walking spaces, Shading and Amenities. The component looks at the comfort and enjoyment of the walking experience.

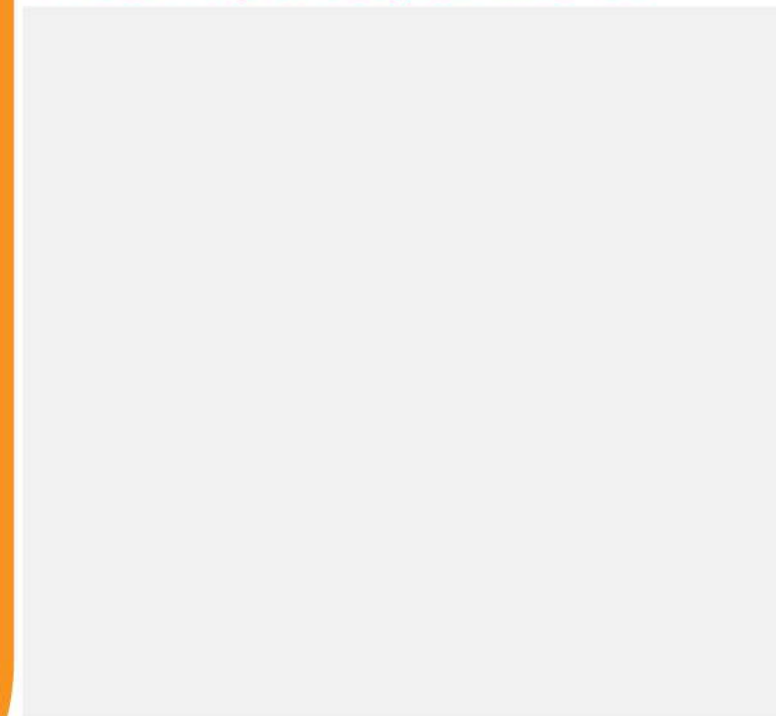


Livability

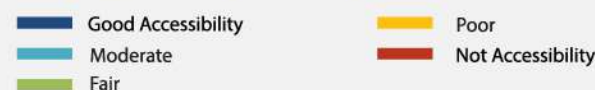
This includes Greenery and Activities along the street. The component helps increasing the potential capacity of walking.

GoodWalk Walkability Index

W Score Map of Bangkok Inner-city



Walkability Index (W Score)



Indicators of Walkability : These refer to indexes of quality of the walking experience based on data on walking behavior in and around Thailand. This study created 3 components with 8 factors

2 Chakrabongse Road

Lat Ya / Yukol 2 / Siam Square soi 2



Safety = 4.00
Convenience = 3.33
Livability = 4.25

3 Rama I Road

Lat Ya / Yukol 2 / Siam Square soi 2



Safety = 3.33
Convenience = 4.33
Livability = 3.50

Top 5 Walkable streets in Bangkok

1 Ratchawong Road



Safety = 4.17
Convenience = 3.50
Livability = 5.00

4 Silom Road

Chulalongkorn soi 12



Safety = 3.50
Convenience = 3.67
Livability = 4.00

5 Phra Athit Road

Tri Phet / Sukhumvit / Na Phra That



Safety = 3.50
Convenience = 3.50
Livability = 4.00

Recommendations for change



The GoodWalk project will produce **Design Guidelines for the Streetscape** which address the context and needs of the city in efficient ways. It can serve as a model for redevelopment going forward.

The streetscape of the GoodWalk City has benefits for every pedestrian and creates a positive, lasting impression. The GoodWalk City highlights the impressive features of the city to help visitors appreciate the beauty, comfort, and uniqueness of the urban environment.

Prototype of good-to-Walk Street



Street Furniture Standard

Road Sign Standard

Open Space Standard

Planting

Other Standards : Traffic Safety / Universal Design